



Great Escape This grand Greenwich estate is on the market for \$9.5 million, offered by Sharon Kinney and Margaret Vorder Bruegge of Douglas Elliman in Greenwich. 203-536-2014 and 203-912-8311.

on a smaller scale—this 11,000-square-foot home retains its vintage features, including intricate woodwork, eight fireplaces and a grand entrance hall with a carved staircase. But the rooms have been beautifully updated, especially the marble-clad kitchen, with its double islands, and the glamorous library with lacquered walls and a marble fireplace. On the lower level, there's a media room, pool room and gym. The third level, with a cupola, can be used as an office. In between: six ensuite bedrooms. And on the two-acre grounds, there are gardens, a pool and a lighted tennis court. The property is offered by Sharon Kinney and Margaret Vorder Bruegge of Douglas Elliman.

MODERN MASTERPIECES

JOHN BLACK LEE, WHO IS OFTEN CALLED THE SIXTH of the Harvard Five architects, designed eight homes in New Canaan, including a glass house in Silvermine for himself, and worked for such architectural giants as Walter

on the Connecticut market. The 22-acre estate sits at the summit of Round Hill, the highest point in Greenwich, with views over Long Island Sound and all the way to the Manhattan skyline. The stylish couple spent six years renovating the circa-1939 main house, which was built for a real estate magnate, then owned by art patron and philanthropist Joseph Hirshhorn, of the Hirshhorn Museum in Washington, DC.

Along with restoring its grand architectural features—a turret, an ornately carved and curved staircase—the 13,344-square-foot interiors also offer a theater with hand-painted-fabric walls, a wine cellar and tasting room, and six bedrooms and 10 bathrooms. And the grounds are equally spectacular, starting with maze-like hedges fronting the entrance, another garden of sculpted boxwood and a rose garden with a fountain. There's also a pool, tennis court and four-bay garage, all kitted out for a car collection. Janet Milligan of Sotheby's International Realty has the listing.

Another re-do of a Greenwich manse is a circa-1903 shingle-style home called Gray Gables, listed for \$9.5 million. Like the Hilfiger place—but

Gropius and Eliot Noyes. One of Lee's dwelling is a dramatic, low-slung house built in 1957 on nearly three acres along Oenoke Ridge. When the current owners bought it, they undertook a thoughtful renovation, expanding the home by adding a second structure, while extending the original roofline to connect the old with the new. The addition has a bluestone façade, clerestory windows and glass doors, with a new main bedroom and bath that opens onto a terrace. Additional cool features include an "art lift" in the living room, which lowers the artwork on the wall to reveal the television underneath. There's also a sculptural Corten steel fence that acts as a veil in the formal gardens. The property, which has four bedrooms and four bathrooms, lists for \$5 million with Inger Stringfellow and Leslie Razook, both of William Pitt Sotheby's International Realty.



Modern Marvel This circa-1957 New Canaan modern was designed by architect John Black Lee. It's listed for \$5 million with Inger Stringfellow and Leslie Razook, both of William Pitt Sotheby's International Realty in New Canaan. 203-321-9361 and 203-918-4452.

BOTTOM: PETER AARON



It's A Natural Designed to be at one with nature, this circa-1963 Redding modern lists for \$1.3 million with Inger Stringfellow of William Pitt Sotheby's International Realty in New Canaan. 203-321-9361.

Another one-of-a-kind modern is on the Redding market, listed for \$1.3 million. It was built in 1963 by Bruce Falconer, a Yale-trained architect and associate of Victor Christ-Janer. On nearly three secluded acres, the glass-walled structure is terraced into a slope, surrounded by trees and natural rocks. With 16-foot ceilings, the open-plan interior spaces are light and bright, designed to bring the outside in. The core of the home is built around a stunning free-form pool with a terrace and pool house. Inger Stringfellow of William Pitt Sotheby's International Realty has the listing.

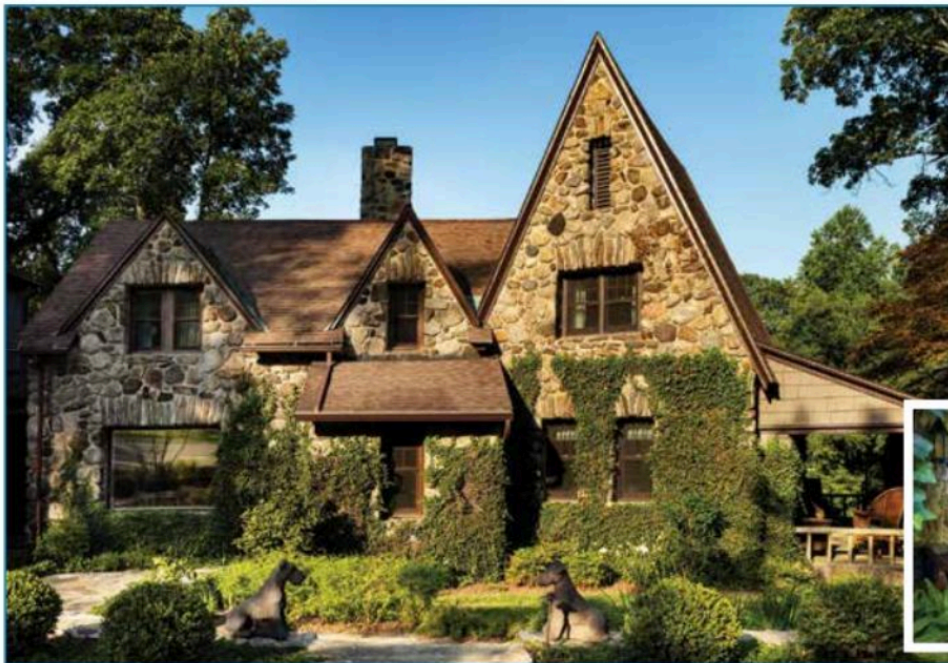
"THE BEST HOUSE IN WILTON"

A 100-YEAR-OLD HOUSE IN WILTON OFFERS VIRTUALLY ALL THE elements Connecticut buyers are looking for. The classic Colonial, set on

nearly four acres within walking distance to the town center, has a wide and welcoming wraparound front porch and hand-carved front door. It has formal gardens, a pool and a sunken firepit. Across the 6,500-square-foot interiors, there are walls of French doors, opening onto the terraces, one with a fabulous outdoor fireplace and six bedrooms, one with a sitting room. There is also a brick-walled wine cellar and tasting room, a home theater and a gym. And as a work-from-home amenity, the library has a fireplace, but also a telephone closet that was transformed into a wet bar. It lists for \$3.6 million with Team Crosland of William Pitt Sotheby's International Realty. —*Diane di Costanzo*

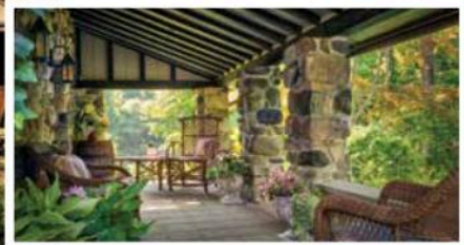


A Connecticut Classic This renovated, circa-1916 Wilton estate lists for \$3.6 million with Team Crosland of William Pitt Sotheby's International Realty in Westport. 203-216-3110.



COTTAGECORE RENTAL

One of the very few comforts ushered in this year is "cottagecore," defined by the kind of sweet, cozy and traditional décor you might find in a Cotswold cottage. If the aesthetic appeals to you, here's an opportunity to live the life—in the form of a Redding rental listed for \$11,000 per month. The 11-room, circa-1928 home was renovated a few years ago to cottagecore perfection, retaining the rustic beamed ceilings, stone walls and hearths and gabled ceilings. It lists with Gail Lilley Zawacki of Coldwell Banker. 203-856-9949.



Visit cottagesgardens.com/news to start receiving our dailyDeeds newsletter